



Producer's Installation Manual

General Information

Hog Hearth® Double Mat

Designed to service two farrowing crates

(24" x 48", 60cm x 120cm) or (24" x 60", 60cm x 152cm)

Available in 120, 208 & 240 volts



Hog Hearth® Single Mat

Designed to service single farrowing crate

(14" x 48", 35.6cm x 120cm) or (14" x 152cm)

Available in 120, 208 & 240 volts



MSU (Master Sensor Unit)

Designed to regulate temperature of all mats running on a common controller

(14" x 48", 35.6cm x 120cm) side connect

Available in 120, 208 & 240 volts.



HMI (Heat Mat Indicator) –

Red light indicates the Hog Hearth® Mat drawing current and producing heat

Operates @ 120, 208 & 240 volts.



Installation

Note:

Hog Hearth mats should be handled with care. Do not toss or carry heat mat by the cord as this may cause damage to the cord/connector and the void warranty. Heaters rated above 120 volts are shipped without cord ends as higher voltage cord ends vary from country to country / supplier to supplier. Back connected heat mats are shipped without cord ends as the plug will not fit through floor holes.

Images of Hog Hearth® Double Mats, MSU & HMI installed



Hog Hearth Double Mat



Hog Hearth Mat w/Feeder



Hog Hearth (MSU)



Hog Hearth (HMI)

Note:

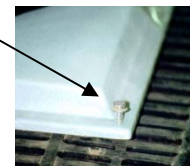
Unsecured heaters may cause damage to the cord and invalidate heater warranty. Ensure the heat mat cord and cord protector are secured at all times to prevent pigs playing with them.

Securing the Hog Hearth® Mat to plastic or steel floor grating

Use J Bolts to fasten edge of mat to graded floor



Use stainless steel screws to secure mat to plastic floor grating.



Note:

Take care drilling through heater flange to avoid popping the PVC back loose from heater shell

Installation Cont.

Top-connect Mat: Recess the PVC conduit to the liquid tight connector and secure it to the divider with at least 2 zip ties. Ensure the zip ties are installed near to the top of the barrier.



Top-connect: a) remove knurled nut b) slide over flexible conduit c) push flexible conduit into connector d) Retighten knurled nut

Note: The flexible conduit slides into the connector approximately 1" (2.54cm). The conduit must be fastened properly to prevent the flexible conduit from slipping loose, exposing the wire to moisture and possible damage.



Bottom-connect Mat: Install wire under crate and secure cord. Electrical cord should be protected from floor level to at least 6' up to avoid damage by workers and pigs.



Bottom connect: ensure the floor grating is cut away to eliminate friction damage to the power cord.



Note:

The cord on the bottom-connected heater should be protected and secured outside the crate. PVC electrical pipe can be used.

Master Control Unit (MSU): The sensor wire from the MSU must not be installed along side high voltage wiring. It must run through its own conduit and connected to the controller independently. Short runs of 2-3 feet (.6 – 1m) are acceptable. General layout of the heat mats and **HMI** lights in the room will determine suggested MSU location. The MSU sensor wire can be extended if required but the connections connection points **must be soldered** and properly sealed from moisture.

The Hog Hearth® **MSU** has a heat sensor mounted internally in the mat. The heat mat installs horizontally on one of the divider in a crate. The bottom edge of the **MSU** should be mounted approximately 4" off the floor. The sensor is electrically connected to the controller via the 18/2 grey wire. The controller will show the actual heat temperature of the MSU which in turn controls all the mats in the room.

Available in 120, 208 & 240 volts.



Warranty:

IHT warrants the Hog Hearth® heat mat to be free of defects in materials and workmanship pro-rated for the period of three (3) years from the original date of purchase by the end user, provided the product has been installed, connected and operated in accordance with IHT's written instructions. This warranty shall be delivered to the end user either directly by IHT or through GSI at GSI's discretion. IHT will replace the heater free of charge, within the first year and at a pro-rated charge for remaining four years. AHSI will return same, shipping prepaid.

This warranty does not apply to damage resulting from surface wear, neglect, abuse, shipping damage, improper voltage connections, incorrect mounting, or color deterioration of the heating unit. The warranty applies to the heater ONLY and no warranties apply to the electrical cord, ends or standpipe. There are no warranties or conditions expressed, written or implied, other than as contained herein, provided that nothing herein modifies or subtracts from mandatory warranties or rights contained in applicable legislation.

Declare, accepting full responsibility, that the product Radiant Heat, Floor Supported Panel Type Animal Brooders, Series FRP65, -70 & -120 with Suffixes to which this declaration relates, conforms with the following standard(s) (1) EN 60335-1:94 per the provisions of the Low Voltage Directive 73/23/EEC and 93/68/EEC in accordance with the provisions of: (2) EN 55014:1993 per the provisions of the Electromagnetic Compatibility Directive (89/336/EEC and 93/68/EEC) directive.

January 14, 1999; Oak Bluff, Manitoba, Canada

__Glenn Hogg__ __President__

205 Oakland Road, Oak Bluff, Manitoba, Canada; R4G 0A4



205 Oakland Rd Oak Bluff, MB, R4G 0A4
P: 204.896.7500 / TF: 800.725.9661